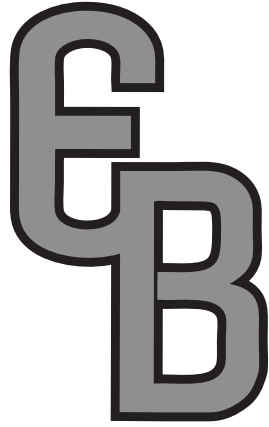




**OCTORARO
ANGUS**



**EM BROOK
ANGUS**

SILVER ANNIVERSARY SALE

**Twenty-Fifth Annual Genetic Seed Saver Sale
Saturday, November 7, 2020 at 12:30 PM
Em Brook Farms
2970 Helixville Rd., Schellsburg, PA 15559**

Em Brook/Octoraro Angus

“SILVER ANNIVERSARY – GENETIC SEED SAVER SALE”

It is our pleasure to invite you to our 25th Annual “SILVER ANNIVERSARY—GENETIC SEED SAVER SALE” on November 7, 2020 at Em Brook Farms, Schellsburg, PA 15559. The sale will start at 12:30 PM. with a very special recognition to Sam by AAA. The American Angus Association’s Historic Angus Herd Award will be presented to Sam for his 50 years of continuous production of registered-Angus cattle. As most of you know Sam has been a terrific mentor to a lot us in the development of our Angus herds over most of those 50 years. The news release on Sam’s great achievement and a pic of his citation are included later in our catalog. We are not sure but we don’t know of anyone or any group in Pennsylvania to have 25 consecutive annual Angus cattle sales.

Our “PICK OF THE FLUSH” has been a big success for us since we started it a few years ago and so we are doing it again in 2020 as LOT # 1. The 2019 “PICK” produced 25 embryos in 2020 for our high bidder. This was the most we have gotten so far and we were all pleased with the production of the Prince of Malpas daughter’s performance. This year’s “PICK” will be one of three outstanding “Vindicator of Milford” (AAA # 2864524) heifers. We are very grateful to have an excellent friend and partner in Randy Sipe and his family from the great state of North Carolina, for helping us in developing the Vindicator line of embryos and these 3 terrific ET daughters. So, we thank Randy for his dedication and commitment to our joint cattlemen’s journey, his huge volume of knowledge of not only Wye cattle but cattle in every sense and most of all his friendship. In June our journey with Randy continued with the setting of 28 ET’s (Embryo Transfers) with our recip herd in West Virginia at Bob & Genny Mallow’s farms. Our IVF program is designed to develop a maternal standard in our genetics. This standard is our “Pursuit of Excellence” thru “Old Reliable Wye Genetics”. We feel these 3 Vindicator daughters in this year’s “PICK” are right on in this pursuit. (See more details under LOT # 1)

From the “PICK” in Lot # 1, we move to our Embryo page as LOT # 2. This year we have something for everyone with 20 lots, 10 different Wye Angus bulls from “Yesteryear” and most are “SEXED FEMALE EMBRYOS” to give you every opportunity to get those special females in your herd. We have received great reports back from Michigan, Washington, Kentucky and PA on the performance of our embryos this past year. We would be remiss if we did not give credit to Allison May and her Trans Ova staff in Boonsboro, MD for their excellent work and care in producing our embryos and moving them safely to are friends/customers. They are second to none in our book. On the ET side in 2020, we added a pair of Bonanza of Wye, AAA # 4792475 heifers out of one of our Prince daughters. They are quite the pair and continue our “Pursuit of Excellence” with the old Wye Bonanza bull and we are willing to share this combination in LOT # 2D on the embryo page. Finally, at the bottom are 2 lots of embryos from our past with Sam’s old Emulation 310 bull to a couple of cows Sam and I wish were still around. These are the last embryos of their kind.

All of our 2020 three-year-old class of cows with a few surprises here and there are posted after the embryo sections. All 3-year-old cows are prefect in their production, meaning all have had 2 calves in their 3 years.

So goes our cattlemen’s journey with you our friends. After 25 sales we are still excited and look forward seeing you on November 7th and/or talking to you about our life’s work, breeding cattle. Until then, we are truly guided by a greater power, for which, we are grateful.

www.embrookangus.com
info@embrookangus.com

Em Brook Angus
2970 Helixville Road
Schellsburg, PA 15559

Farm: 814-733-4552
Rick’s Cell 814-937-7867
Richie’s Cell 814-977-7696
Ryan’s Cell 814-502-0489
Sam’s Cell 814-889-9196

TERMS & CONDITIONS: Terms are Cash. All purchases are to be settled for on sale day, unless prior arrangements have been made. The cattle sell under the standard terms and conditions as adopted by the American Angus Association. Any females selling for \$2000 or less will be sold without registration papers. If the new owner wants the registration transferred to their AAA account, they may be purchased for \$100 each. Please let cashier know when you settle for your purchase. All cows selling for \$2000 or more, will have registration papers transferred to the new owner at no cost.

BIDDER REGISTRATION: Auctioneer may refuse to register or expel any person who is disruptive, noncompliant, or previously caused a problem of any kind for seller or auctioneer.

HEALTH/VACCINE: All cattle have been treated with CattleMaster GOLD FP 5 L5, Ultrabac 7, Cydectin Pour on and have been Johnes tested and are negative.

SCHEDULE: You are invited to inspect the sale offering anytime prior to the sale. Please call to arrange a suitable time.

SALE DAY: Cattle will be on display in grass paddocks on the farm. However, cattle will not be run through a sale ring at the time of sale. We urge you to come early in order that you have adequate time to review the sale offering and make your selections. It is recommended that you take the opportunity to walk through the herd, where you will find daughters, dams, siblings and several sires of the sale offering.

CONFERENCE CALL NUMBER FOR SALE DAY: For those who cannot attend auction day and who want to bid , please use this conference call number and access code: 605-313-6338, Access Code: 816280. The sale starts promptly at 12:30 PM, so we ask that you check in and register early. Swope Auctioneers will be on the conference call to help you with registering, bidding and answer any questions. Prior to the sale Swope Auctioneers are available to help you, please see their numbers below. If you have any problems with the conference line on sale day, please call any of the numbers below and one of our staff will assist you.

TRANSPORTATION: See Sam Wylie or Rick Emerick to arrange your trucking needs.

LIABILITY: Anyone visiting the sale site does so at their own responsibility and risk, without liability to Em Brook Angus and Octoraro Angus.

Buyers unable to attend sale may send their bids to the following recipients:
Mark Swope (814) 977-7552
Rick Emerick, Em Brook Angus (814) 937-7867 or (814) 733-4552
Sam Wylie, Octoraro Angus (814) 889-9196

Additional Sale Day Numbers:
(814) 977-6167 Ezra Swope
(814) 977-7696 Richie Emerick
(814) 502-0489 Ryan Emerick

Local Hotels:
Hampton Inn and Suites (814) 624-0101
Travelodge Bedford (814) 623-9006
Quality Inn Bedford (814) 623-5188

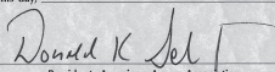


HISTORIC Angus Herd AWARD

This is to certify That
Samuel J. Wylie III
qualifies as a Historic Angus Herd
for having been a continuous producer of
Registered Angus Cattle for
50 Years

Attested to this day, 09/14/2020

Signed


President, American Angus Association



Pennsylvania Farm Recognized as a Historic Angus Herd

Octoraro Angus has been home to Angus cattle for more than 50 years.

Sam Wylie III, a third generation Angus breeder, founded Octoraro Angus in Nottingham, Pennsylvania in 1970. Angus cattle have always been a huge part of his life.

As a young man, Wylie was active in 4-H and junior Angus activities. He was the first winner of the National Junior Angus Showmanship contest in 1967 but realized early on there was more to cattle breeding than the show ring.

Wylie traveled extensively throughout the United States and was fortunate enough to be mentored by some of the old master Angus breeders. He took an artificial insemination course in 1970 and has utilized the Angus Herd Improvement Records (AHIR®) since that time.

Many of Wylie's cow families have received Pathfinder recognition.

In recent decades he has specialized in breeding cattle with an emphasis on maternal traits and grass-based genetics. He has done extensive line breeding to preserve the integrity of the Angus breed.

"I've mentored younger Angus breeders in establishing their own programs," Wylie said. "I'm grateful to all my cattle friends as I go along my life's work."

Today, Wylie's herd consist of 40 head. He uses advanced embryo transfer and in vitro fertilization work to preserve maternal traits of the Angus breed. This fall marks the 25th anniversary for the Octoraro Angus and Em Brook Angus Annual Genetic Seed Saver Sale.

The American Angus Association's Historic Angus Herd Award recognizes Angus breeders and immediate families who have been in continuous production of registered-Angus cattle for 50 years or more. Visit www.angus.org for more information or to view a list of awarded members since the program began in 1988.

— Written by Amber Wahlgren, Angus Communications

Lot 1

Partnership Offering

Our special 50 % partnership offering features a series of flushes from our 3 ET Vindicator of Milford (2864524) daughters. Vindicator of Milford was one of the early imported bulls from Scotland into the Wye program and a son of Gedmon of Kinermony (AACAS 132212B). The three were born in 2019, one out of our 109 cow (Georgia) O Miss Father L 28-109 (16346978), a Father of Wye (5221331) daughter and two out of our 12 cow Queen Mother of Wye UMF 10409 (17606176) a Forceful of Wye (8792721) daughter. The first of the three is OEB Milford 901 (19545865) out of the Father daughter 109. And, the other two are OEB Milford 904 (19545863) and OEB Milford 905 (19545864) going back to Forceful of Wye (8792721) (DOB 01/31/1976), a son of Valour of Ardrass (2632813) and grandson of Prince Paul of Barnoldby (AACAS 142220B). These heifers are line bred for maternal efficiency at its best. In our quest to preserve the old reliable, trouble free Angus females, we chose these matings to produce linebred, purebred, and trouble-free genetics that we feel are needed to restore our breed. Maternal Angus qualities have been diminished through selection for terminal growth and dollar beef value. The future of our Angus breed starts with females bred like these with a specific selection toward "MATERNAL PARENT STOCK".



OEB Milford 901



OEB Milford 904



OEB Milford 905

"PICK OF THE FLUSH"

Guidelines for the sale of a 50% partnership with Octoraro/Em Brook Angus for future IVF flushes for the successful buyer's pick of the three (3) Vindicator of Milford daughters: OEB Milford 901, OEB Milford 904 or OEB Milford 905.

- Partner will share in the decision of what semen (from our inventory) to be used in the flushes.
- Donor cow will stay at Em Brook board free.
- All prep labor, transportation to collection facility and administration of partnership records all covered by Octoraro/Em Brook.
- Production costs for collection will be shared equally.
- Embryos will be split 50-50. Partner will take possession of their 50%.
- Natural born calves of donor are not part of this partnership.
- Octoraro/Em Brook will insure the value of the successful bid for 2 years for an untimely death of the donor.

Embryo Lots

We have always focused on maternal efficiency. We demand a moderate framed, 1200 pound, easy keeping, long lived and trouble free type of female. Years ago, we noticed that our breed had been downgraded to nothing more than registered black composites. At that time we started a program to stockpile semen on some of the old pillar bulls of the breed that had the ability to transmit the maternal goodness that we focus on. Today, we are using those bulls in our embryo program. In recent years the commercial breeder has begun to notice that the females of today are not as long lived, trouble free and productive with as good of udder quality, feet and leg structure as what the old Angus cows previously had. To accomplish our goal, to preserve the maternal goodness of the Angus breed, we feel that we have to return to the linebred, purebred type females of the past. They were easy keeping, long lived and trouble free. They worked well in the past and they will work in the future to correct some of the fallacies that have resulted from single trait selection for terminal traits that is being used today.

2A This lot of embryos are out of Miss Qualton 809, a young female that we like and was sired by Qualton of Wye. Qualton is a Lonestar son that goes back to Luria to Prince of Malpus. 809's dam was our good Alap female, Babs 90, that we had great success in our embryo program. We are offering four IVF Non-Sexed sired by Banjo of Wye 6413.

2B These embryos are out of the O Miss Father L28-109, the cow Rick bought from Spen Oliver in GA. She is a very good Father of Wye daughter. There are three IVF Sexed Female embryos sired by Churchill of Wye being offered. Churchill was a son of Lodge of Wye, who had genetic defect free status. His dam was the famous Colleen cow, a daughter of the imported Gaird of Dalmeny bull. Colleen was noted by Jim Lingle, "As the greatest matron to ever walk the Wye Plantation pastures". Colleen was also the dam of Columbus and Corbin. An excellent mating in this offering.

2C These embryos are also out of the O Miss Father L28-109. The three IVF Non-Sexed embryos were sired by Banjo of Wye. Banjo is a Lonestar son. Lonestar's dam was the famous Luria cow and she produced over five tons of calves and was the oldest living Pathfinder cow. Banjo did a remarkable job in the Deboo Diamond D program in Valier, MT., breeding fertility, longevity and maternal function into their females. These embryos are tightly linebred to Prince of Malpus.

2D These embryos are out of the OEB Miss Prince 808. She is a Prince of Malpas daughter. Prince was an imported bull. There is a lot of goodness in this female, excellent in her kind, fancy uddered and the bonus is that she excels at producing embryos. We chose to breed her to Bonanza of Wye. We recently acquired the Bonanza semen. Bonanza's dam is the cow that we are trying to replicate. She was the Blythe cow. She weaned over five and ½ tons of calves in her lifetime. She is a Geordus daughter, out of a Mulben Envoist daughter. All these bulls were imported and had the ability to transmit the traits that we are looking for. We are selling three IVF Sexed Female embryos by old Bonanza. They are worthy of your consideration.

2E and 2F These embryos are out of the OED Miss Prince 808. She is absolutely a beautiful cow and one of the best cows that we have ever been affiliated with. She is deep bodied, with a strong maternal wedge, beautiful udder and a fancy front end. She is just the ideal cow to help preserve the maternal function in the Angus breed. We are offering two lots of IVF Sexed Female embryos sired by Federal. Federal was a Career son of Prince of Malpus and out of Fabron's dam, the Matilda cow. Federal was a tremendous bull. I remember his daughters, as they were real deal brood cows.

2G and 2H These embryos are also out of Miss Prince 808. She is a daughter of Prince of Malpas, out of the Forceful sired #12 cow. She has tremendous capacity, fleshing ease and is very correct and pleasing in her kind. We have high hopes for this cow. She is a good embryo producer and we are selling three IVF Sexed Female embryos sired by Lodge of Wye in each lot. Lodge of Wye was an excellent stock bull and was a real udder improver and female maker.

2I and 2J Embryo lots are out of Queen Mother of Wye 10409, the #12 cow, sired by Forceful of Wye. These embryos were sired by Churchill. As noted previously, Churchill was a son of the Colleen cow. 3 IVF non-sexed embryos sired by Churchill are being offered in each of these lots.

2K and 2L These embryos are also out of Queen Mother of Wye 10409 who is the #12 cow, sired by Forceful of Wye. Two lots of Three IVF Sexed Female embryos, sired by Qualton of Wye will be selling. Qualton was a Lonestar son that was used successfully in the Shoshone herd in Wyoming. Qualton was a real female maker transmitting quality udders and excellent maternal function.

2M and 2N These are embryos from Queen Mother of Wye 10409 cow (Forceful daughter). These two lots of three IVF Sexed Female embryos are sired by Fargo of Wye. Fargo was a Landrover son out of the fine Farrah cow, a daughter of Father of Wye. Farrah was a daughter of the Flarabell cow that went back to Fabeola. Fabeola was a daughter of the imported Geordus bull. Fargo did an outstanding job at the Irvington Farm in Georgia and was used back into the Wye program. He can definitely transmit the traits that we are looking for.

2O This is an offering from our Queen Mother of Wye 10409 cow (Forceful daughter). These are 3 IVF Sexed Female embryos sired by Fornson of Wye AAA # 4792473. Fornson is a Fortrel son DOB 02/24/1965. Fornson is a grandson to Francis of Wye and on the Dam side to Valour of Ardrass. The Fornson/10409 combination creates a great opportunity for a different angle on some great genetics of "Yesteryear".

2P and 2Q This is another offering from Queen Mother of Wye 10409. This matting is with Fahren of Wye Umf 5830. Mark Deboo in Montana used Fahren with terrific success over the years. We used a son Fahren 21X from Diamond D for our exported embryos. Fahren is a son of Fenland/Favour/Lodge. What else can be said, another great combo. We have 2 lots for sale with 3 IVF Sexed Female embryos in each.

2R This lot of embryos is out of the Copeland of Wye cow, the #10 cow. She is a daughter of Lonestar with a fancy pedigree. This is an excellent young cow that does a fine job, with a good udder, good structure and feet. We love this cow and her pedigree. We are offering three of her IVF Non-Sexed embryos sired by Boyd of Wye. Boyd was a son of Vindicator of Milford, a very good imported bull that was used successfully in the Wye program. Boyd did things so well and did nothing wrong that years later Wye brought him back into their program and they now have eight bred yearling daughters. Rick purchased Boyd semen and is very enthused about using this Vindicator son in our flush program. We have three weanling Vindicator daughters in the herd that will be in the "Pick of the Flush" in our 25th sale in 2020.

2S This is a set of 2 IVF Sexed Female embryos out of one of our Donors we have used over the years in our Argentine partnership. Qctoraro Esterine 202 has been "very special" for us over the years. These embryos are the last of their kind to Sam's great cow maker bull Octoraro Emulation 310.

2T The Em Brook Miss Wix 801 embryos are from another of Sam's all-time favorite cows and she was sired by the Pinebank Wai Group 41/97 bull. She has tremendous volume and capacity, an excellent maternal wedge, and is fancy fronted. We are selling four IVF Sexed heifer embryos sired by our good, old female maker Octoraro Emulation 310 bull. Do not miss the opportunity to purchase embryos identical to what we use ourselves.



Lot 2

2020 FROZEN EMBRYOS

A. OEB Miss Qualton 809	19240975	4 IVF	N-Sexed	Banjo of Wye 6413	11216396
B. O Miss Father L 28-109	16346978	3 IVF	Sexed F	Churchill of Wye	6026113
C. O Miss Father L 28-109	16346978	3 IVF	N-Sexed	Banjo of Wye 6413	11216396
D. OEB Miss Prince 808	19240973	3 IVF	Sexed F	Bonanza of Wye	4792475
E. OEB Miss Prince 808	19240973	3 IVF	Sexed F	Federal of Wye	4144440
F. OEB Miss Prince 808	19240973	3 IVF	Sexed F	Federal of Wye	4144440
G. OEB Miss Prince 808	19240973	3 IVF	Sexed F	Lodge of Wye	4020202
H. OEB Miss Prince 808	19240973	3 IVF	Sexed F	Lodge of Wye	4020202
I. Queen Mother of Wye 10409	17606176	4 IVF	N-Sexed	Churchill of Wye	6026113
J. Queen Mother of Wye 10409	17606176	4 IVF	N-Sexed	Churchill of Wye	6026113
K. Queen Mother of Wye 10409	17606176	3 IVF	Sexed F	Qualton of Wye	8180039
L. Queen Mother of Wye 10409	17606176	3 IVF	Sexed F	Qualton of Wye	8180039
M. Queen Mother of Wye 10409	17606176	3 IVF	Sexed F	Fargo of Wye 5813	10748957
N. Queen Mother of Wye 10409	17606176	3 IVF	Sexed F	Fargo of Wye 5813	10748957
O. Queen Mother of Wye 10409	17606176	3 IVF	Sexed F	Fornson of Wye	8792721
P. Queen Mother of Wye 10409	17606176	3 IVF	Sexed F	Fahren of Wye	10762574
Q. Queen Mother of Wye 10409	17606176	3 IVF	Sexed F	Fahren of Wye	10762574
R. Copeland of Wye 10087	17051360	3 IVF	N-Sexed	Boyd of Wye 8059	13075280
S. Octoraro Esterine 202	17447061	2 IVF	Sexed F	Octoraro Emulation 310	12975036
T. Em Brook Miss Wix 801	14959779	4 IVF	Sexed F	Octoraro Emulation 310	12975036



Donors List:

Copeland of Wye UMF 10087

Cow 17051360 Tattoo: 10087 01/29/2011

Corbin of Wye
Lonestar of Wye
Luria of Wye

Fabron of Wye
Colleen of Wye

Prince of Malpas
Lolita of Wye

Angwin of Wye Umf 7097
Copeland of Wye Umf 7546
Copeland of Wye Umf 7029

Leonid of Wye
Alexina of Wye Umf 6749

Bellevue of Wye Umf 5875
Copeland of Wye Umf 6378



Copeland of Wye UMP 10087



Queen Mother of Wye UMP 10409

Queen Mother of Wye UMF 10409

Cow 17606176 Tattoo: 10409 02/05/2013

Valour of Ardrass
Forceful of Wye
Fairlie of Wye

Prince Paul of Barnoldby
Vacuna of Calehill

Fendell of Wye
Felicia of Wye

Fahren of Wye Umf 5830
Queen Mother of Wye UMF 8376
Queen Mother of Wye 7829

Fenland of Wye
Florelle of Wye Umf 5229

Bartor of Wye Umf 5609
Queen Mother of Wye Umf

O Miss Father L 28-109

Cow 16346978 Tattoo: 109 09/26/2008

Conan of Wye
Father of Wye
Fine of Wye

Francis of Wye
Clarice of Wye

Prince of Malpas
Fauna of Wye

CT Irvington Fargo 3309
O Miss Fargo 21-28
O Miss Fargo 1-21

Fargo of Wye Umf 5813
CT Irvington 5838 Fwk 2868

CT Irvington Fargo 2363
O Miss Quotemark 74-1

O Miss Father L 28-109 is a donor cow that Sam and Rick purchased in partnership from Oliver Angus in Georgia, last fall. She is an aged cow, a direct daughter of Father of Wye. Remember Father's dam was a good Prince of Malpas daughter. This cow's bottom side reads a double shot of Fargo of Wye, and linebreeds back into the great old brood cow, 935 Fabiola of Wye, a Geordus daughter. We used reverse sorted Federal semen on 109 and three of her IVF sexed heifer embryos are being offered. Banjo was also used IVF on this cow and has three non-sexed embryos offered this year. 109 is deep and spacious, beautifully structured with a fancy udder. This is a fine old brood cow with an outstanding pedigree. We are very pleased with her, so do not overlook these embryos.



O Miss Father L 28-109



Em Brook Miss Wix 801

Em Brook Miss Wix 801

Cow 16121240 Tattoo 801 03/26/2008

Pinebank Waig 31/95
Pinebank Waigroup 41/97
Pinebank 639/88

Pinebank Waig 5/93
Pinebank Waig 58/93

Tupurupuru 838/86
Pinebank 663/85

Octoraro Addison 203
Octoraro Miss Wix 313
Octoraro Miss Wix 930

O C C Anchor 771
Octoraro Gammer 203

Shoshone Eros 1702
Octoraro Miss Wix 713

OEB Miss Prince 808

Cow 19240973 Cow Tattoo: 808 03/13/2018

Jumor Eric of Southburn
Prince of Malpas
Pride of Malvita

Ballin Bremmor of Douneside
Jerra Erica

Prince Paul of Leslie
Pride of Mandore

Forceful of Wye
Queen Mother of Wye UMF10409
Queen Mother of Wye UMF 8376

Valour of Ardrass
Fairlie of Wye

Fahren of Wye Umf 5830
Queen Mother of Wye 7829



OEB Miss Prince 808



OEB Miss Qualton 809

OEB Miss Qualton 809

Cow 19240975 Tattoo: 809 03/15/2018

Lonestar of Wye
Qualton of Wye
Quija of Wye

Corbin of Wye
Luria of Wye

Father of Wye
Quila of Wye

Alap of Wye UMF 8329
Newports Babine 90
Blackbird of Wye UMF 8711

Manning of Wye
Alexina of Wye Umf 6968

Albay of Wye UMF 8331
Blackbird of Wye Umf 7350



Luria of Wye - #1022

We would like to incorporate her maternal goodness into our herd through linebreeding to her son Lonestar.



Colleen of Wye - #417

The finest cow to ever walk the Wye pastures. We are trying to incorporate her goodness through Columbus, Corbin and Churchill.

Embryo/Pick Sires



Lodge of Wye



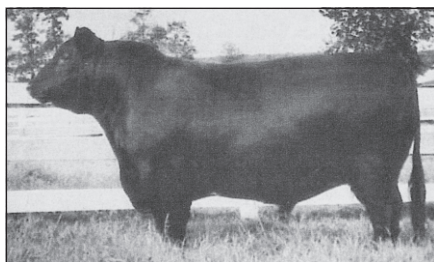
Banjo of Wye



Qualton of Wye



Vindicator of Milford



Churchill of Wye



Fornson of Wye



Emulaton 310



Prince of Malpas



Federal of Wye



Bonanza of Wye

Embryo/Pick Sires



Fargo Of Wye



Pasture Management



Wrapping Hay



Jamie's Graduation at P-ville Ball Park,
on to Penn State



New neighbor - PA Black Bear

Lot 3

OA/EBA Copeland 701

COW 19081485 Tattoo: 701 05/09/2017

Lonestar of Wye
Qualton of Wye
Quija of Wye

Corbin of Wye
Luria of Wye

Father of Wye
Quila of Wye

Lonestar of Wye
Copeland of Wye UMF 10087
Copeland of Wye Umf 7546

Corbin of Wye
Luria of Wye

Angwin of Wye Umf 7097
Copeland of Wye Umf 7029

OA/EBA Copeland 701 is the 1st of two (2) Qualton of Wye (8180039) daughters in our sale for 2020, they were our "PICK OF THE FLUSH" in 2018 and our Ohio partners shared several successful flushes from that "PICK". 701 and 704 (Lot # 3) are book ends in every way. Qualton's claim to fame was in the Larry Leonhardt's Shoshone Angus, WY. In the Shoshone program, Qualton of Wye helped the reverse selection from performance to production-based genetics. Qualton was a son of Lonestar and Lonestar's Dam was Luria of Wye - #1022(AAA # 4020176), who lasted over 20 years and weaned over 5 tons of calves. The Dam of 701 and 704 are also Lonestar daughters (out of our 10 cow Copeland of Wye 10087 (AAA # 17051360), making both double bred granddaughters of the "Grand Old "LONESTAR OF WYE" (AAA # 7478224). These genetics are ideal for preserving maternal efficiency back into our breed.



OA/EBA Copeland 701



OA/EBA Copeland 702

Lot 4

OA/EBA Copeland 702

Cow 19070060 Tattoo: 702 05/12/2017

Lodge of Wye
Churchill of Wye
Colleen of Wye

Career of Wye
Lorena of Wye

Gaird of Dalmeny
Clara Jean of Wye

Lonestar of Wye
Copeland of Wye UMF 10087
Copeland of Wye Umf 7546

Corbin of Wye
Luria of Wye

Angwin of Wye Umf 7097
Copeland of Wye Umf 7029

OA/EBA Copeland 702 is also a daughter out of our 10 cow Copeland of Wye 10087, a Lonestar daughter. 702 is sired by the grand old Churchill of Wye, AAA # 6026113, who was out of the famous Colleen of Wye, AAA # 1559908 cow. It would be hard to find a pedigree is better than Colleen. Colleen was Jim Lingle's favorite cow and Luria is Sam's favorite cow. 702 just weaned a 549# heifer calf this fall. She carries a great Wean Index of 107 after 2 calves and is headed for Pathfinder. Preg checked safe to Prince 801.

Lot 5

OA/EBA Copeland 704

COW 19081498 Tattoo: 704 05/12/2017

Lonestar of Wye
Qualton of Wye
Quija of Wye

Corbin of Wye
Luria of Wye

Father of Wye
Quila of Wye

Lonestar of Wye
Copeland of Wye UMF 10087
Copeland of Wye Umf 7546

Corbin of Wye
Luria of Wye

Angwin of Wye Umf 7097
Copeland of Wye Umf 7029

OA/EBA Copeland 704 is the 2nd of our Qualton of Wye daughters, all the same information in 701's description. Both are bred safe to our OA/ EBA Prince 801 bull, AAA # 19242002.



OA/EBA Copeland 704



Em Brook Miss Wix 750

Lot 6

Em Brook Miss Wix 750

Cow 18915403 Tattoo: 750 05/07/2017

O C C Homer 650H
Em Brook Homer 313
Octoraro Miss Wix 313

O C C Focus 813F
O C C Dixie Erica 816B

Octoraro Addison 203
Octoraro Miss Wix 930

Em Brook Cedric 101
Em Brook Miss Wix 585
Em Brook Miss Wix 304

Em Brook Harbinger 755
Em Brook Emma 101

Baldric of Wye UMF 10099
Em Brook Miss Wix 004

This is a "SPECIAL ALERT" EB Miss Wix 750 is the 1st of only 2 cow/calf pairs in our sale this year. 750 is a very efficient, easy keeping type with a quality udder. The first of 7 cows sired by EB Homer 313 (AAA # 17981495) The 313 bull brings great calving ease to these combinations. 750 has a super +23 \$EN and a +7 CED. This is a "don't miss pair", as she did a terrific job with a heifer calf out of EB Emulation 144. Our best 2 for 1 deal in this year's sale.

All of our cows in this year's sale are full proof, as 3 year olds, they have had 2 calves.

Lot 7

Em Brook Miss Wix 746

Cow 18917274 Tattoo: 746 05/01/2017

Pinebank Waigroup 41/97
Em Brook Waigroup 219
Octoraro Delia 219

Pinebank Waig 31/95
Pinebank 639/88

Octoraro Rito 054 203
Octoraro Delia 804

Octoraro Emulation 310
Em Brook Miss Wix 203
Em Brook Miss Wix 801

Emulation 31
Octoraro Delia 310

Pinebank Waigroup 41/97
Octoraro Miss Wix 313

EB Miss Wix 746 is a special feature cow. This is one of two cows out of our Pinebank Waigroup 219 bull and her dam is our old 203 donor cow. We used 203 for a number of years in our IVF program and sold many embryos out of 203. 746 weaned one our best HC and has a wean ratio of 111 and has been flawless with both of her calves. She has a terrific udder to go with her unique pedigree, don't miss this cow. Preg checked safe to Banjo 9956 for a spring calf.



Em Brook Miss Wix 746



Em Brook Miss Wix 743 with bull calf

Lot 9

Em Brook Miss Wix 743

Cow 18915392 Tattoo: 743 04/22/2017

O C C Rear End 751R
Em Brook Rear End 902
Octoraro Delia 902

O C C Homer 650H
FCC Revolution Rose 995N

Shoshone Eros 1702
Octoraro Delia 725

Em Brook Waigroup 219
Em Brook Missie 561
Em Brook Missie 128

Pinebank Waigroup 41/97
Octoraro Delia 219

Em Brook Blackjack 501
Em Brook Queen Missie 928

This is the last of our cow/calf pairs in this year's sale. This is another direct daughter out of our good Rear End 902 bull. She is very pleasing in her maternal function, a fancy uddered young female. She has a very moderate frame with volume, capacity, and fleshing ease. 743 is doing a great job raising a bull sired by Emulation 144.

Lot 11

Em Brook Delia 805

Cow 19336075 Tattoo: 805 03/09/2018

Career of Wye
Lodge of Wye
Lorena of Wye

Fabron of Wye
Clarice of Wye

Prince of Malpas
Devotion of Wye

Octoraro Emulation 310
Em Brook Delia 102
Octoraro Delia 520

Emulation 31
Octoraro Delia 310

Octoraro Allegheny 203
Octoraro Delia 216

EB Delia 805 is an ET daughter to the grand old Wye bull, Lodge of Wye, AAA # 4020202. Lodge needs no explanation, other than one of the top bulls to come out of Wye Angus. We are very impressed with this young cow. 805's Dam (Em Brook Delia 102, AAA # 17084448) was sold into Adair, Oklahoma at Bell Rule Genetics, she was the top selling cow in our sale in 2014. 805 has a dynamic breeding combination with a +26 \$EN and already is at 109 on Wean Ratio. She just weaned her first calf, a HC at 537#. Only a 2 year 805 has unlimited potential, preg checked safe to Em Brook Mr Spen 109 (AAA # 19232613).



EmBrook Delia 805



Em Brook Delia 736

Lot 12

Em Brook Delia 736

Cow 18915374 Tattoo: 736 04/10/2017

Octoraro Ritulation 2503
Octoraro Ritulation 301
Octoraro Delia 301

Rito 054 G D A R
Octoraro Delia 503

Shoshone Viking GD60
Octoraro Delia 503

KA Powerade 221
Em Brook Delia 320
Octoraro Delia 520

K A Messenger 427
K A Blackcap 602

Octoraro Allegheny 203
Octoraro Delia 216

ATTENTION SPECIAL ALERT - This another AI bred cow from our Delia cow family. 736 is out of Octoraro Ritulation 301 (AAA # 16666794). The 301 bull was sold into Nebraska 8 or 9 years ago to Ron Bolze and Brian Sprenger and serviced them very well. Sam's renown 301 cow out of (Shoshone Viking GD60-AAA # 8805991 & Octoraro Delia 503 AAA # 10772507) was one of our best Donors for many years. The proof is a Wean Ratio of 108 with a 526# HC weaned this fall. Again, we feel this cow has "A VERY SPECIAL BREEDING" that is not going to be available any longer. Preg checked safe to Banjo 9956 for 2021 spring.

Lot 13

Em Brook Babine 748

Cow 18915402 Tattoo: 748 05/02/2017

O C C Homer 650H
Em Brook Homer 313
Octoraro Miss Wix 313

O C C Focus 813F
O C C Dixie Erica 816B

Octoraro Addison 203
Octoraro Miss Wix 930

Em Brook Encore 314
Em Brook Babine 583
Newports Babine 90

KA 7503-508
Octoraro Queen Missie 314

Alap of Wye UMF 8329
Blackbird of Wye UMF 8711

748 is a one of a kind out of the Babine cow family and sired by EB Homer 313. Her pedigree is very unique and worthy since Babine 90 (Wye Angus cow line) was one of our Donor cows and a major contributor to our Embryo Program over the years. 748 carries many of those traits tying with the 751 cow for the highest \$EN in the sale (Non Wye cow lines) at +23. Preg checked safe to Banjo 9956.



Em Brook Babine 748



Em Brook Queen Missie 752

Lot 15

Em Brook Queen Missie 752

Cow 8915400 Tattoo: 752 05/12/2017

O C C Homer 650H
Em Brook Homer 313
Octoraro Miss Wix 313

O C C Focus 813F
O C C Dixie Erica 816B

Octoraro Addison 203
Octoraro Miss Wix 930

Em Brook Encore 001
Em Brook Queen Missie 572
Em Brook Queen Missie 214

Em Brook Encore 314
Em Brook Miss Wix 001

Ka Elrod 49
Octoraro Queen Missie 333

Only 2 Queen Missies in our sale this year, 752 is the 1st to sell. 752 is sired by EB Homer 313 and out of the Queen Missie 572-cow sold to Harry Fisher, Bluff View Farms, Aledo, IL in 2018. Aledo, IL is the home of the "Slammer", please don't ask our auctioneer about that place. Back to 752, this cow is functional and efficient with a +20 \$EN. Preg checked safe to Banjo 9956.

Lot 17

Em Brook Missie 825

Cow 19232641 Tattoo: 825 04/24/2018

O C C Moderator 825M
Em Brook Moderator 140
Em Brook Majesty 140

O C C Headliner 661H
O C C Dixie Erica 845K

Ka Elrod 49
Em Brook Majesty 813

Em Brook Homer 801
Em Brook Missie 661
Em Brook Missie 116

O C C Homer 650H
Em Brook Miss Wix 801

Octoraro Rito 503
Octoraro Queen Missie 232

EB Missie 825 is sired by EB Moderator 140. On her Dam side (EB Missie 661), she is in the productive Missie cow family, just weaned her first calf at 575# and has the highest wean ratio in the 2018 class at 117 after her 1st calf. I had to mention the ratio for Harry Fisher's sake, since Harry owns Missie 661. To say 825 is off to a great start is an understatement. 825 has all the makings for a successful career as a good old fashion Angus brood cow. Preg checked safe to Banjo 9956.



Em Brook Missie 825



Em Brook Delia 817

Lot 18

Em Brook Delia 817

Cow 19232632 Tattoo: 817 04/06/2018

O C C Moderator 825M
Em Brook Moderator 140
Em Brook Majesty 140

O C C Headliner 661H
O C C Dixie Erica 845K

Ka Elrod 49
Em Brook Majesty 813

Em Brook Homer 313
Em Brook Delia 645
Em Brook Delia 436

O C C Homer 650H
Octoraro Miss Wix 313

Em Brook Hilltopper 216
Em Brook Delia 139

EB Delia 817 is another daughter (2nd of 2 in our sale) out of EB Moderator 140, out of a great OCC bull line for calving ease that we used for a number of years. 817 is a Homer daughter, already is carrying a 103 wean ratio number and just weaned a 509# HC this fall. She is preg checked safe to Banjo 9956.

Lot 19

Em Brook Greta 733

Cow 18915404 Tattoo: 733 04/08/2017

O C C Rear End 751R	O C C Homer 650H
Em Brook Rear End 902	FCC Revolution Rose 995N
Octoraro Delia 902	Shoshone Eros 1702
	Octoraro Delia 725
Em Brook Homer 801	O C C Homer 650H
Em Brook Greta 586	Em Brook Miss Wix 801
Em Brook Greta 319	Em Brook Harbinger 755
	Em Brook Greta 119

This is only Greta cow family in our sale, she is out of the EB Rear End 902 bull (only 3 cows in the sale) (his dam is "Old Bones" Delia 902, which was here for 19 years and had 17 calves. She was one of the best cows we ever bought from Sam. What else can be said this is a very special cow. 733 is another Homer sired daughter and weaned a dandy bull calf at 591#, which will be one of our yearling bulls in the spring sale. She is preg checked safe to Banjo 9956.



Em Brook Greta 733



Em Brook Miss Wix 738

Lot 20

Em Brook Miss Wix 738

Cow 18915397Tattoo: 738 04/14/2017

O C C Homer 650H	O C C Focus 813F
Em Brook Homer 313	O C C Dixie Erica 816B
Octoraro Miss Wix 313	Octoraro Addison 203
	Octoraro Miss Wix 930
Octoraro Ritulation 301	Octoraro Ritulation 2503
Em Brook Miss Wix 566	Octoraro Delia 301
Em Brook Miss Wix 103	KA Powerade 221
	Em Brook Miss Wix 703

We started our sale in 2018 with 738's dam Em Brook Miss Wix 566, she sold to the Bupp Family in York, PA and is still doing well at Locust Lane Farms, so you know this daughter is not far from the prefect pattern. She is a Homer daughter, so calving else is a plus. Weaned a very good heifer calf this fall and carries a nice +18 in \$EN. Preg checked safe to Banjo 9956 for a spring calf.

Lot 21

Em Brook Missie 735

Cow 18915370 Tattoo: 735 04/09/2017

Emulation 31
Octoraro Emulation 310
Octoraro Delia 310

Ka Elrod 49
Em Brook Majesty 140
Em Brook Majesty 813

F C R Elation Lad 652
Miss Emulous 243

Shoshone Viking GD60
Octoraro Delia 810

Shoshone Elcore 203-3117
KA Blackcap 408P

KA Powerade 221
Octoraro Queen Missie 333

735 is an AI daughter out of Sam's great cow maker bull Octoraro Emulation 310 (AAA # 12975036), although long gone, 310 still makes his presence known and 735 is a great example. Her Dam is EB Majesty 140, still here at Em Brook at 9 years old and just weaned her 8th calf, one of our best heifers of 2020 out of Banjo 9956. This is a very special breeding and deserves your consideration. This is the last known 310 cow at Octoraro or Em Brook. 735 is preg checked safe to Banjo 9956 again for spring of 2021.



Em Brook Missie 735



Em Brook Miss Burgess 745

Lot 22

Em Brook Miss Burgess 745

Cow 18915396 Tattoo: 745 04/29/2017

O C C Homer 650H
Em Brook Homer 313
Octoraro Miss Wix 313

KA Powerade 221
Em Brook Miss Burgess 565
Em Brook Miss Burgess 120

O C C Focus 813F
O C C Dixie Erica 816B

Octoraro Addison 203
Octoraro Miss Wix 930

K A Messenger 427
K A Blackcap 602

Ka Elrod 49
Em Brook Miss Burgess 836

Another one of a kind, 745 is the only Miss Burgess in our sale. Her sire is EB Homer 313 to add to her outstanding \$EN index of +21. 745 carries a 103 wean ratio with a weaned 565# BC this fall. She has weaned two really good calves. All this adds up to a bright future for this cow. Preg checked safe to Banjo 9956.

Lot 23

Em Brook Missie 751

Cow 18917120 Tattoo: 751 05/10/2017

O C C Rear End 751R	O C C Homer 650H
Em Brook Rear End 902	FCC Revolution Rose 995N
Octoraro Delia 902	Shoshone Eros 1702
	Octoraro Delia 725
Em Brook Homer 801	O C C Homer 650H
Em Brook Missie 559	Em Brook Miss Wix 801
Em Brook Missie 306	Em Brook Harbinger 755
	Em Brook Missie 116

The last cow out of the EB Rear End 902 in our sale this year and forever. The 902 bull is gone and so we will be closing another chapter on Delia 902 cow we called "BONES". With a 19-year history and 17 calves here at Em Brook, 751 has it all. Look at the \$EN at +23 (tied with highest \$EN index in the sale other than the WYE/WYE cows) and CED + 7 and you have a last opportunity to get a part of one of the best. 751 is preg checked safe to Banjo 9956.



Em Brook Missie 751



Em Brook Miss Wix 730

Lot 24

Em Brook Miss Wix 730

Cow 18915378 Tattoo: 730 03/25/2017

O C C Homer 650H	O C C Focus 813F
Em Brook Homer 801	O C C Dixie Erica 816B
Em Brook Miss Wix 801	Pinebank Waigroup 41/97
	Octoraro Miss Wix 313
Ka Elrod 49	Shoshone Elcore 203-3117
Em Brook Miss Wix 337	KA Blackcap 408P
Em Brook Miss Wix 012	Em Brook Codova 238
	Em Brook Miss Wix 757

Another Miss Wix cow family product, sired by Homer 801, makes a great building block for your cow herd. Good udder, easy keeping and proven for the long haul. Weaned a very nice heifer calf out of EB Emulation 144. She has been one of the first to calve in each of her 2 calving seasons here at Em Brook. 730 is preg checked safe to Banjo 9956.

Lot 25

Em Brook Delia 742

Cow 18915386 Tattoo: 742 04/22/2017

O C C Homer 650H	O C C Focus 813F
Em Brook Homer 801	O C C Dixie Erica 816B
Em Brook Miss Wix 801	Pinebank Waigroup 41/97
	Octoraro Miss Wix 313
Em Brook Encore 314	KA 7503-508
Em Brook Delia 445	Octoraro Queen Missie 314
Em Brook Delia 109	KA Powerade 221
	Octoraro Delia 219

One of the highest weaning index cows in our sale at 112, 742 is sired by EB Homer 801 (AAA # 17652186) who was out of our old productive 801 Donor cow. This gives 742 Encore up and down in her Delia pedigree and certainly extends the maternal goodness you need in a brood cow. She is built for a grass-based program. Low input, and unlimited potential. Preg checked safe to Banjo 9556.



Em Brook Delia 742



Em Brook Queen Missie 754

Lot 26

Em Brook Queen Missie 754

Cow AAA 18915401 Tattoo: 754 06/10/2017

O C C Homer 650H	O C C Focus 813F
Em Brook Homer 313	O C C Dixie Erica 816B
Octoraro Miss Wix 313	Octoraro Addison 203
	Octoraro Miss Wix 930
Em Brook Waigroup 219	Pinebank Waigroup 41/97
Em Brook Queen Missie 575	Octoraro Delia 219
Em Brook Queen Missie 219	Em Brook Glanworth 708
	Octoraro Queen Missie 232

The 2nd and last Queen Missie cow in our sale, 754 is also sired by EB Homer 313. Along with Homer she has Encore up and down in her pedigree. This has always added to the maternal traits in a brood cow. With a +8 CED and a +19, her number show she has what it takes to do her job and certainly worth your consideration. Preg checked safe to Banjo 9956.

Lot 27

Em Brook Gammer 731

Cow 18915375 Tattoo: 731 03/28/2017

O C C Homer 650H
Em Brook Homer 801
Em Brook Miss Wix 801

O C C Focus 813F
O C C Dixie Erica 816B

Pinebank Waigroup 41/97
Octoraro Miss Wix 313

Em Brook Hilltopper 216
Em Brook Gammer 326
Em Brook Gammer 136

KA Powerade 221
Octoraro Delia 216

Octoraro Embassy 401
Em Brook Gammer 823

This is the only cow from our Gammer cow family in this year's sale. Her dam 326 was one of the top selling cows in 2017. Another Homer sired cow with a great +9 CED (calving ease direct). She is built for grass-based programs, low input and longevity. She weaned a nice HC this fall at 501#. Preg checked for an early spring calf to Banjo 9956.



Em Brook Gammer 731



Em Brook Miss Wix 739

Lot 28

Em Brook Miss Wix 739

Cow 18915398 Tattoo: 739 04/16/2017

O C C Homer 650H
Em Brook Homer 313
Octoraro Miss Wix 313

O C C Focus 813F
O C C Dixie Erica 816B

Octoraro Addison 203
Octoraro Miss Wix 930

Em Brook Cedric 101
Em Brook Miss Wix 567
Em Brook Miss Wix 345

Em Brook Harbinger 755
Em Brook Emma 101

Ka Elrod 49
Em Brook Miss Wix 954

Another EB Homer 313 daughter out of the Miss Wix 567 cow bought a couple of years ago by Circle C Acres, Mio, MI. 739 is a cut of the old mode of the Miss Wix cow family with good cow lines and a great udder. She has done very good with her 2 calves to date, this year was a 509# HC. Please take a look at her, you just know she can be special. Preg checked safe to Banjo 9956.

Lot 29

Em Brook Miss Wix 756

Cow 18915382 Tattoo: 756 06/21/2017

O C C Homer 650H
Em Brook Homer 801
Em Brook Miss Wix 801

O C C Focus 813F
O C C Dixie Erica 816B
Pinebank Waigroup 41/97
Octoraro Miss Wix 313

Em Brook Powerade 844
Em Brook Miss Wix 419
Em Brook Miss Wix 201

KA Powerade 221
Em Brook Miss Wix 844
KA Powerade 221
Octoraro Miss Wix 313

EB Miss Wix 756 is another Homer daughter out of Miss Wix 419 a cow sold to Don Wyer, WV in 2017. 756 carries the Powerade line on the Dam side of her breeding. This is a great cow maker combination with a +19 \$EN to go along with her +8 CED. She is built for a forage-based operation and is bred safe to Banjo 9956.



Em Brook Miss Wix 756



Em Brook Miss Wix 734

Lot 30

Em Brook Miss Wix 734

Cow 18915379 Tattoo: 734 04/08/2017

O C C Homer 650H
Em Brook Homer 801
Em Brook Miss Wix 801

O C C Focus 813F
O C C Dixie Erica 816B
Pinebank Waigroup 41/97
Octoraro Miss Wix 313

Ka Elrod 49
Em Brook Miss Wix 345
Em Brook Miss Wix 954

Shoshone Elcore 203-3117
KA Blackcap 408P
KA 7503-508
Octoraro Miss Wix 015

734 is sired by Homer 801 and out the Miss Wix 345 cow sold to Ryan Bossert, NY in 2017. Weaned a nice heifer calf this fall. A nondescript cow like so many that just does her job as a good momma cow, a very functional and efficient cow. Preg checked safe to Banjo for spring 2021.

Lot 31

Em Brook Delia 737

Cow 18915399 Tattoo: 737 04/11/2017

O C C Homer 650H
Em Brook Homer 313
Octoraro Miss Wix 313

O C C Focus 813F
O C C Dixie Erica 816B

Octoraro Addison 203
Octoraro Miss Wix 930

Em Brook Waigroup 219
Em Brook Delia 571
Em Brook Delia 110

Pinebank Waigroup 41/97
Octoraro Delia 219

Octoraro Emulation 310
Em Brook Delia 831

EB Delia 737 is another good EB Homer 313 daughter out of the good Delia 571 cow. She has the volume and udder to be a very productive cow. She has proven her value with 2 calves on in her very young cow career. Preg checked safe for spring to Banjo 9956.



Em Brook Delia 737



Em Brook Missie 747

Lot 32

Em Brook Missie 747

Cow 18915373 Tattoo: 747 05/02/2017

Pinebank Waigroup 41/97
Em Brook Waigroup 219
Octoraro Delia 219

Pinebank Waig 31/95
Pinebank 639/88

Octoraro Rito 054 203
Octoraro Delia 804

Em Brook Harbinger 755
Em Brook Missie 306
Em Brook Missie 116

Cedric of Wye UMF 8998
Em Brook Miss Wix 755

Octoraro Rito 503
Octoraro Queen Missie 232

This is the last Pinebank Waigroup cow in the sale. 747 is out of the old reliable Missie cow family. Many of the Missies go on to double digit years of production. She weaned a 524# HC and has a wean ratio of 106. 747 has those same maternal lines to go along with her performance to date. Preg checked safe to Banjo 9956.

Lot 33

Em Brook Miss Wix 740

Cow 18915391 Tattoo: 740 04/17/2017

O C C Homer 650H
Em Brook Homer 801
Em Brook Miss Wix 801

O C C Focus 813F
O C C Dixie Erica 816

Pinebank Waigroup 41/97
Octoraro Miss Wix 313

Em Brook Waigroup 219
Em Brook Miss Wix 461
Octoraro Miss Wix 237

Pinebank Waigroup 41/97
Octoraro Delia 219

Octoraro Anchor 750
Octoraro Miss Wix 038

EB Miss Wix 740 is a daughter to EB Homer 801 which carries all the calving ease you would want. Her Dam was 461, which was highly fertile and did a nice job here at Em Brook. 740 is right along those same lines, weaned a 543# BC. She will be a great addition to your herd. Preg checked safe to Banjo 9956.



Wm Brook Miss Wix 740



Em Brook Delia 741

Lot 34

Em Brook Delia 741

Cow 18915387 Tattoo: 741 04/21/2017

O C C Homer 650H
Em Brook Homer 801
Em Brook Miss Wix 801

O C C Focus 813F
O C C Dixie Erica 816B

Pinebank Waigroup 41/97
Octoraro Miss Wix 313

Em Brook Hilltopper 216
Em Brook Delia 447
Octoraro Delia 302

KA Powerade 221
Octoraro Delia 216

BAX Elite 16-4182
Octoraro Delia 454

Another EB Homer 801 daughter from the Delia 447 cow, out of the Delia cow family. 741 carries very good index in CED +8, weaned a568# BC and has a 103 wean ratio. This exciting young female offers balance in her pedigree for performance, longevity, with a quality udder. Preg checked safe to Banjo 9956.

Natural Service Sires:

Em Brook Angus Spring Natural Service Sires

OA/EBA Prince 801 (19242002) (03/05/2018) is a son of Prince of Malpas (2776941) (04/12/1956). Prince was imported to America to Wye Angus and became one of the most influential bull in developing the Wye herd. We used Prince 801 to breed most of our Wye Donor Cows this summer. 801 has a +11 CED (Calving Ease Direct) and a huge \$EN of +34, an unheard-of number in today's so-called modern Angus cows.



Octoraro Embrook Banjo 9956 (18754822) (09/02/2016) is a son of the "Famous" Banjo of Wye UMF 6413 (11216396), who is a son Lonestar of Wye (7478224) (01/15/1972). We picked Banjo 9956 because of his maternal function, calving ease +8, \$EN at +24 and forage adaptability. His dam is a Favour of Wye (6418161), Clarkson of Wye UMF 9166 (15141486) and Alap of Wye (13641146) daughter. 6413 has been an instrumental component of maternal efficiency.



Car Load -
Em Brook Angus Long Yearling Bulls



Chestnut Ridge FFA
KEYSTONE FARMER DEGREES



Penn State Wrestling - Rec Hall

NOTES

NOTES



Em Brook Angus
2970 Helixville Road
Schellsburg, PA 15559